

Please Print

Name: _____

Address: _____

Phone: _____

Email: _____

Important: You must attach the following information to the back of your work:

Title / Price / Your Name / Address / Phone / Email

Title # 1

Category _____ Price _____

Title # 2

Category _____ Price _____

Title # 3

Category _____ Price _____

The Faulkner County Library will host the 2021 CLA Fall Show from **September 25th through October 30th**.

Drop off for artwork will be Saturday, September 25th from 1 – 4 pm.

*Please complete this form to submit with artwork.

Entry Fee: \$20 for 1 / \$25 for 2 / \$30 for 3

Each member of Conway League of Artists may submit up to three entries. Completed entry form may be submitted with artwork; make checks payable to Conway League of Artists.

**Membership in CLA must be current to participate. Annual dues of \$25 may be paid at time of drop off on September 25th. (Please pay dues with a separate check).*

Number of Entries: 1 2 3

Amount Paid: _____

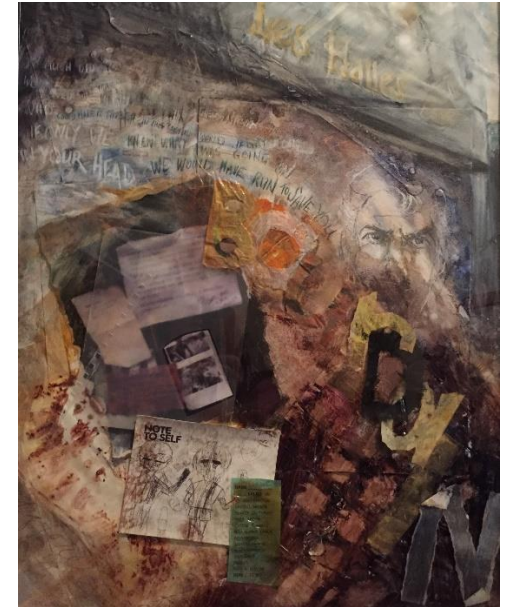
Cash/Check # _____

Categories:

- 1) Land/City/Waterscape
- 2) Animal/Wildlife
- 3) Still Life/Floral
- 4) Portrait/Figure
- 5) Abstract
- 6) Sculpture/3D

Conway League of Artists 2021 Fall Show

September 25th – October 30th



CLA Best of Show Winner – Spring 2020
“Bourdain’s Curbside Service to Go” by Suzann Waggoner



www.conwayleagueofartists.com

2021 Fall Show Judge Holly Laws



Holly Laws is a sculptor who makes objects and multimedia installations. Her approach is informed by a love of experimentation with all manner of materials and processes. She employs labor-intensive and time-consuming techniques that are often associated with craft, a specific trade, or women's work, as opposed to fine art. Laws received a BFA in Sculpture from Virginia Commonwealth University in Richmond, and an MFA in Sculpture from Tyler School of Art, Temple University in Philadelphia. She moved to Arkansas in 2008 for a faculty position at the University of Central Arkansas, and currently teaches classes in Three-Dimensional Design, Contemporary Media, and Sculpture. She lives in Mayflower with her two cats, and seven chickens, including Beatrice, pictured above.

Awards

- Best of Show - \$500
- 1st Place - \$100
- 2nd Place - \$50
- Honorable Mention

**The number of awards will vary according to the number of submissions in each category. No one work of art or entrant will be awarded more than one judged award.*

Awards will be presented at the Conway League of Artists monthly meeting on October 13th at 6:30 at the Faulkner County Library.

For questions about the Conway League of Artists 2021 Fall Show, please contact Show Chair Shirley Bowen at shirley.bowen@gmail.com.

Note:

The information presented in this form is accurate as of the time of printing and allows for activities consistent with current state and federal guidelines regarding Covid-19.

Should the health guidelines change before September 25th, or during the show dates, the CLA Fall Show could be affected and notice will be given.

Show Rules / Requirements

- Entries must be appropriate for public viewing by all ages.
- Artwork must be original (no class work or copies of other artwork) and completed within the last two years.
- Artwork must have wire with screw eyes or D-rings. No sawtooth hangers.
- Watercolors, pastels, graphics, photographs and all two-dimensional artwork on paper must be framed with glass or plexiglass. All unframed and gallery wrapped canvas must be painted on all sides.
- Maximum size, including frame, is 41 inches on longest side.
- Artwork must remain on display for the duration of the show.
- Previous winning entries from prior shows are not eligible for entry.
- 3D works must be stable to avoid damage to art or viewer. Work will be displayed openly on library shelves.
- CLA and FCL are not responsible for damages or loss. Reasonable care will be given to works submitted.